

Patchers at the Lakeshore News

www.palsquiltguild.org

February 2019

PALS Quilt Guild Meeting

February 4, 2019

6:30 pm Meeting

Fellowship Reformed Church

4200 Apple Ave. Muskegon

2019 PALS Executive Board

Chairpersons**

Rae Simerick & Cinda Cogswell

Co-Chairpersons**

Unfilled

Immediate Past Chairs**

Jami Harwood & LouAnn Mrotz

Secretary**

Su Palmer

Treasurer**

Suzette Mattson

Asst. Treasurer

Connie Pluger

Media**

Deb Taylor & Chris Willis

Resources**

Betty Ross & Michelle Lundeen

Committees

Marketing

Marilyn Anderson

Membership

Rhesa Martin & Judy McCauley

Historian

Kathy Preston (temporary)

Charity & QOV Quilts

Cindy Vogel, Sally Lawrence

Cathy Baker

Library

Barb Reynolds

Bee Keeper

Carolyn Dakin

Lighthouse Liaison

Kay Wilton (temporary)

Quilt Show (2019)

Kathy Johnson

Marilyn Suchecki

Carla Redenius

Board Meeting

February 25, 2019 6:30PM

Next Newsletter Deadline

February 15, 2019

quilterscafe278@yahoo.com

From Your Chairs – Rae Simerick & Cinda Cogswell

Happy New Year!

We have just held our first January meeting in four years. Can you believe this weather?! I was very excited to see the projects everyone is working on and the finished projects as well. There was so much positive feedback that we plan to continue this at each meeting. It was encouraging to see that some of you signed up for the classes we are holding featuring Kelly Young. To cover her expenses, each class has to have a minimum of 15 people. That should not be difficult as we have a membership of 125.

As of February we are one month closer to our Quilt show in May. My hope is everyone is planning on finishing their projects that are in progress for the show. There can't be a quilt show without your quilts. I have one to bind yet! And lastly, we would be remiss if we didn't thank each one of you for all the many hours you give of yourselves to our various charities: Charity quilts, Quilts of Valor, Chemo Caps and more. You make this guild AWESOME!

Continue to bring any unfinished project you may have to the February meeting. Since it is February and it's Valentine's Day, bring any Valentine themed quilt you have made for our Show and Tell.

Have a Happy Sew Day!

Meeting Cancellation Information

In case of inclement weather, notifications will be sent to WZZM-TV and WOOD-TV stations. If at all possible, an email blast will be sent to members who receive their newsletters via email.

Patchers at the Lakeshore 2019 meetings

February: Sewing Bee for Charity Quilts

March: QOV Speaker, QOV Presentations and Mug Rug Auction

April: Kelly Young, website www.myquiltinfatuation.com. Classes Sunday, 3/31 and Monday, 4/1

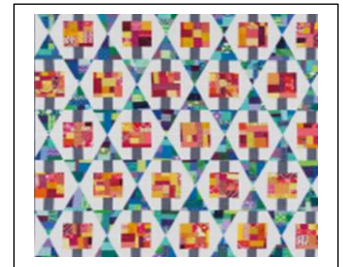
Let's start your new year out with a new quilting technique! We have several spots open for Kelly Young's improvisational piecing classes.

These classes are for confident beginners so anyone can join in and have a great time! Grab a friend and decide which day is best for you. For both classes you will need the book "Stash Statement ". It retails for \$23.99. You might find it on Amazon or JoAnns .

Beach Retreat
Sunday, March 31,
2019
9am-4pm at:
Quilted Memories
Montague
\$55plus book



Firepit
Monday, April 1,
2019
9am-4pm at:
Quilted Memories
Montague
\$55 plus book



May: AnnMarie Rowland, Presentation, Monday, 5/6; A Musical Trunk Show, No classes
Pieces of Time stitches the two together. Through song, story, and a collection of quilts, AnnMarie takes you along on a happy trip through time and place. You'll laugh, and you'll cry, and maybe view the quilts in your life just a bit differently.

June: TBD

July: Quilted Memories Ruler Demo, website www.quiltedmemoriesmi.com

August: Picnic

September: Joint meeting in Grand Haven with Lighthouse Guild

October: Diane Knott, website www.dianedknott.com



I created the online pattern company and website called Butterfly Threads Quilting. Diane enjoys traveling and teaching from her two books published by C&T, Scrap Quilt Secrets and Strip Quilt Secrets.

Membership

Rhesa Martin & Judy McCauley

Hi everyone. We hope you all enjoyed our January 7th meeting. There were 85 members that evening. Eight were renewals and one was a new member, Joyce Donner. Welcome, Joyce. Members, please remember to stop and pick up your name tags located at the Membership table, if you haven't done so. Keep in mind, the new name tags have the current year written on them which you need to show at 2019 events and places that offer PALS Member discounts.

Charity Quilts

Cindy Vogel, Sally Lawrence & Cathy Baker

We want to give a big "thank you" to the quilters who have already donated quilts this year. They are beautiful and will be loved by the children who receive them!

This month at our February 4th PALS meeting we are having a sewing night just to work on baby and kids quilts. Please come and bring your sewing machine and tools and you can sew up a quilt. We will have ready-to-sew kits provided or you can bring your own project to work on. For those who don't want to bring their machine, please bring your rotary cutter and cutting mat to help cut or just bring your creativity to help sort fabrics into kits.



Quilts of Valor

Cathy Baker

Mark your calendars!

PALS will have a sew-in at Abbi May's February 23 from 10 am to 3 pm for Quilts of Valor. Bring your sewing machine and standard sewing supplies. We will have a quilt cut out and ready for piecing. You are welcome to bring your own project if you prefer. If you don't want to bring your machine and sew, please come help cut or press. You'll have a great time for a great cause!

Make plans to come to the PALS general meeting in March 2019 and hear about the QOV cause from our local coordinator. Please bring any completed QOV quilts that night.

PALS Quilt Show Board has started planning your 2019 Quilt Show

PALS members, it is time to register your quilts for our Quilt Show. You may enter two quilts and a challenge quilt. Registration forms are in the newsletter. Please submit a separate form for each quilt with a picture. Make sure labels are on your quilts. The registration coordinators Ann Caris, Terry Maleski and Sue Fiori will be at the February meeting. Registration forms for "Bed Turning" quilts should be given to Kathy Johnson. Thank you to those who are delivering the rack cards and posters to quilt shops. More posters will be available at the meeting to be taken to restaurants, businesses and libraries.

Our February raffle item is this adorable Valentine Mini Wall quilt donated by guild member Marilyn Suchecki Raffle tickets are 4/\$1 and are available at the guild meeting.



Boutique

Jan Alder & Sheila Baldwin

WOW, we're taking in so much for the Boutique, I'm sure it'll be a great success. Thank you all for measuring and marking the fabrics you are donating, as well. As you clean out the old to make room for the new, please think of the upcoming quilt show.

Volunteers

Lynne Osborn

Many volunteers will be needed to have a successful quilt show. We will be scheduling shifts at our next PALS meeting. Please stop by the volunteer table and sign up for one shift or maybe more. Many hands make light work.

Raffle Quilt

Suzette Mattson

Ladies: Your winning ticket awaits you. Our beautiful "Blue Beauty" quilt would be a wonderful gift or as your own keepsake. But you can only win if you purchase tickets. They will be on sale at the next guild meeting. See Kathy Johnson or Carla Redenius at the Quilt Show Table. The prices are: **one for \$5 or three for \$10.**

Challenge Quilts

Challenge fabric will be available at each meeting at the Quilt Show table. The red batik is \$4.00 for a fat quarter. The rules are printed below and will be given with the fabric at time of purchase.

1. Size 20" X 20 " -- Quilts outside this size will not qualify for judging
2. Must be 3 layers--- top, batting and backing. Also, must be bound
3. Must be quilted by hand or machine
4. The challenge must be completed by one person
5. No names on the front of the quilt
6. Entry must have a registration form
7. Challenge fabric is provided at a cost of \$4.00 per fat quarter
8. Additional fabric may be purchased from the Challenge Chair
9. Entry must have a recognizable amount of the challenge fabric within the quilt design, not just the binding or backing

10. 2019 Challenge quilt must have at least one heart. It may be pieced, appliqued, or three dimensional.



Threads of Friendship Quilt Show

Presented by

Patchers on the Lakeshore (PALS) Quilt Guild

May 10 & 11, 2019

What You Need to Know:

- Only active PALS members may enter quilts in the show
- PALS members may each enter TWO quilts for display
- Entry forms are due on or before April 8, 2019 at the PALS general meeting. No late entries will be accepted. NO EXCEPTIONS>
- All entry forms must be accompanied by a photo of the quilt for identification purposes. This does not need to be a professional photo (a home printer copy will work.) Beginning in February, a member of the Quilt Show board will be available to take a photo for your entry if necessary. PHOTOS WILL NOT BE RETURNED.
- Ribbons will be awarded for the 1st, 2nd and 3rd place in the following categories:
 - Large** - 61" x 61" or larger
 - Small** - up to 60" x 60"
 - Miniature** - up to 20" x 20"
 - Guild Challenge** - 20" x 20"
- There will be separate categories for:
 - Hand Quilted**
 - Long Arm Quilted**
 - Domestic Machine Quilted**
- Ribbons will also be given for Best in Show and Viewer's Choice.
- No monetary awards will be given.
- Quilt entries will be accepted at the church ONLY at the following times:
 - Wednesday, May 8, from 5 pm to 7 pm**
 - Thursday, May 9, from 7:30 am to 9 am**
- Please fold all quilts backing side out, with lower right corner of the front turned back. We will demonstrate folding at meetings as the show nears.
- No quilts will be offered for sale at the show
- PALS Quilt Guild and Fellowship Reformed Church are not responsible for loss, theft, or damage to any item displayed at the show. Normal precautions will be taken to protect belongings at all times. The church will be securely locked when not in use. Quilt owners who desire insurance must provide it themselves.
- PALS Quilt Guild is not responsible for any quilt which is not picked up by 6:00 pm Saturday, May 11. No quilt will be released after the show without the claim tag received at drop-off. If your quilt will be picked up by someone else, that person MUST have the claim tag. NO EXCEPTIONS!

Threads of Friendship Entry Form

Quilt Number
(Committee
Use Only)

Name _____

Address _____
Street Address City Zip Phone

Quilt Submission for Which Category?

Large Quilt _____ Small _____ Miniature _____ Challenge _____
61" x 61" or larger Up to 60" x 60" Up to 20" x 20" 20" x 20"

Name of Quilt _____

Name of PALS Member Who Pieced the Quilt _____

Name of Quilter _____

Hand Quilted _____ Long Arm Quilted _____ Domestic Machine Quilted _____

Designer/Artist _____

Title and Source of Pattern (Book/Magazine/Website) _____

Additional Info for Quilt Display Tag (Anything you'd like to share about your quilt in 25 Words or Less)

Signature of Quilter _____

Signature of Guild Representative _____



Threads of Friendship Quilt Claim Form

Quilt Number
(Committee
Use Only)

Name _____

Guild Representative Initials _____

Members

When attending any quilt guild activity or a quilt shop that gives a discount for members, you will need to provide your paper membership card that includes the date. The badge is not enough as it does not prove membership.



Quilted Memories Inc

Quality Fabrics • Supplies • Machine Quilting • Classes

9919 Business US 31 • Montague, MI 49437

231-893-0096 • www.quiltedmemoriesmi.com

"Helping you create tomorrow's treasures"

Visit our website often for updated classes, events and sales!

PFAFF
Perfection starts here™
Sewing Machine Sales



Fabric Quilting Classes

We've moved!

1500 Whitehall Rd., Ste A, Muskegon MI 49445
Hours: Monday-Saturday 10am-5pm-Closed Sunday
Email: Linda@abbimays.com/Phone: 231-563.6861

Elegant Stitches

Longarm Quilting
Statler Stitche

Darla Parks

13548 Greenbriar Dr.
Grand Haven, MI 49417
(616) 607-8122

ElegantStitchesLongarmQuilting@yahoo.com
www.elegantstitchesmi.com

Sales representative for
Gammill Quilting Systems



Get Quilted by Bruce
One Week Turnaround
Edge to Edge Quilting
2¢ per sq. inch
Includes Batting

- Many different quilt designs
- 25 thread colors to choose from
- Two Gammill Statler Stitchers
- We know the results will please you

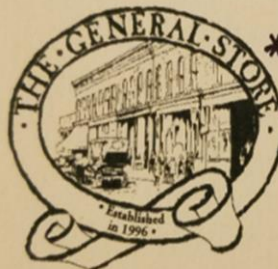
Call Abbi May's for details
231 563.6861

"Of course I'm working!..."



It's a POWER TOOL
with thread.*

The General Store



* Top of the line
Quilting Fabric
* Unique Gifts

103 E. Colby Street
Whitehall, MI 49461

(231) 894-2164

Hours: Mon - Sat: 10 - 5:00

Come Sew With Us

Upcoming Shows & Events for 2019

• Home & Garden Show - Grand Rapids - February 28 - March 3

• Home & Garden Show - Lansing, March 14 - 17



• Handi Quilter Event - Lansing, April 9, 10 & Grand Rapids, April 12, 13
Everything Quilting from beginning to advanced

• **NEW** Anita Goodesign Event - Grand Rapids, May 17, 18
Brand new class! Be the first to attend Anita University 501 in our area



This is just the beginning of an exciting year of shows and events. Come sew with us! We know you will have a great time. Call or come in to any location to register for our Handi Quilter and Anita Goodesign events.



Grand Rapids
3933 Plainfield
(Next to Big Apple Bagels)
616-363-1911

Wyoming
5316 Clyde Park Suite E
(Behind Armies)
616-531-4373

Muskegon
1910 Apple Ave
(Quarter Apple Mall)
231-773-8494

Lansing
444 Frandor
(Frandor Mall)
517-333-0500

Toll Free 888-363-1911

www.gallsewingvac.com



Knowledgeable People

Fun Classes

Great Sewing Machines

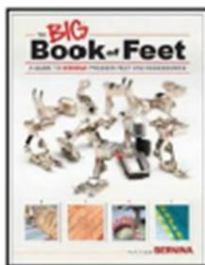
www.lakeshoresewing.com

Check out what's hot at the Muskegon Lakeshore Sewing!



Good Fences with Dianna Michelli

Create a fun 63"x63" quilt with floating stars using squares and strips with the Creative Grids Strippy Stars ruler. Confident Beginner & up, \$40
Wed., Feb. 27 & Mar. 6; 1:00 - 4:00 pm



Bernina Foot Prints with Kathy Ploughman

Explore creative techniques from Bernina's **Big Book of Feet!** \$35/session
Mon., 9:30 am - 12:30 pm
Feb. 11 - Circular Attachment
Mar. 11 - Sideways Motion Foot #40C
Apr. 8 - BSR (Bernina Stitch Regulator)



Gem Bag with Kathy Ploughman

Create this beautiful bag with fabric strips and an interfacing foundation. \$45
Mon., Mar. 4, 11 & 25; 1:30 - 4:30 pm



Discount for Guild Members

Show us this ad and receive 15% off your total purchase of regularly priced items.

Offer not applicable to classes.

PALS Feb. 2019